



**2 Bed Apartment**

**£875 per month**

Leaf Street, Manchester, M15

**Key Features**

New 2 bed apartment • Available immediately • Ground Floor • Unfurnished • Two bathrooms

## Full Description

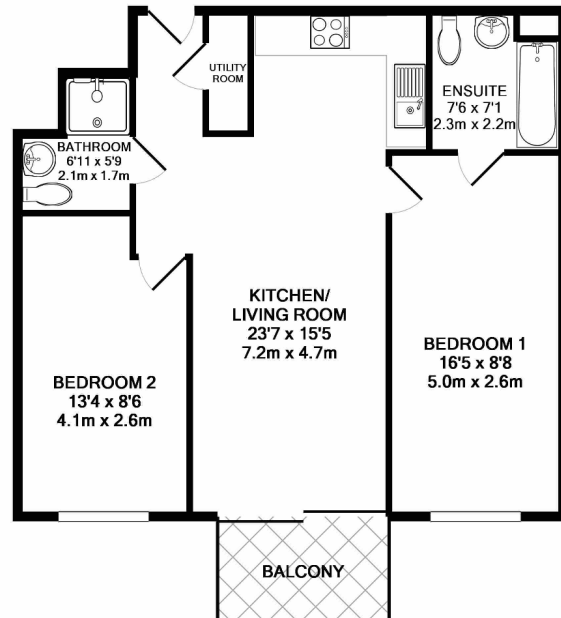
We are pleased to offer this stunning two bedroom, two bathroom apartment, in the Aaben Development. A brand new development of 105 homes, located on Leaf Street in Hulme. The Aaben is the first One Living development by One Manchester, a not for profit organisation providing homes and community services in Manchester. One Manchester's aim is to create communities that are safe, happy and prosperous places to live. All money raised will go into funding other One Manchester projects. You will be able to rent your home for as long as you need to, giving you both security and peace of mind.

With a combination of 1, 2 and 3 bedroom apartments as well as 3 bedroom townhouses these properties are within easy reach of Manchester city centre and with on-site green open spaces. Each property has been designed with quality, comfort and energy-efficiency in mind; meaning homes are built to last, will be better for the environment and will reduce your bills.

This apartment has a spacious internal layout with an abundance of natural daylight. It briefly comprises of an open plan kitchen and living area, balcony to the front of the property, two double bedrooms, one at each side of the living area, a large en suite with a shower over the bath and a separate bathroom with shower and toilet.

Each property is finished to a high standard, featuring wood effect flooring in the living area and hallways as well as carpets in all bedrooms. The kitchen has contemporary high gloss fitted furniture, oak coloured worktops complemented by wall tiling. Every apartment has an integrated washer dryer, a large fridge freezer, integrated dishwasher, hob, cooker hood and oven.

Additional benefits with this apartment include lifts to all floors and secure cycle storage.



TOTAL APPROX. FLOOR AREA 653 SQ.FT. (60.7 SQ.M.)

Whilst every attempt has been made to ensure the accuracy of the floor plan contained here, measurements of doors, windows, rooms and any other items are approximate and no responsibility is taken for any error, omission, or mis-statement. This plan is for illustrative purposes only and should be used as such by any prospective purchaser. The services, systems and appliances shown have not been tested and no guarantee as to their operability or efficiency can be given.  
Made with Metropix ©2017