



2 Bed Flat

£185,000 Leasehold

Ladybarn Road, Manchester, M14

**Key Features**

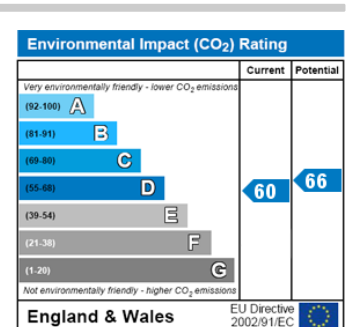
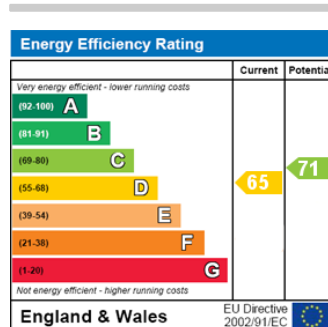
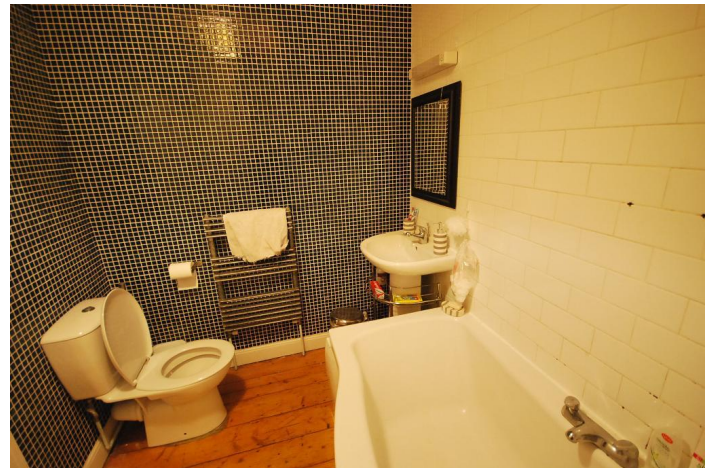
2 Double Bedrooms • Victorian Conversion • Period Features • Ground Floor • Parking  
• Village Centre

## Full Description

We are please to offer this Victorian conversion ground floor flat in prime location of Fallowfield. The flat comprises of entrance hallway, spacious lounge, separate kitchen, two double bedrooms and a modern three piece bathroom suite.

The flat benefits from off street parking and is a stone throw from Sanisbury's and the local amenities Fallowfield has to offer.

Currently tenanted until the 30.06.2022



Strict Codes of Practice

Townhouse Lettings is a member of The Property Ombudsman, and complies with the Tenancy Deposit Protection Scheme. These memberships provide landlords and tenants with an assurance that they will receive the highest level of customer service.