



6 Bed Terraced

£410,000 Leasehold

Fleeson Street, Manchester, M14

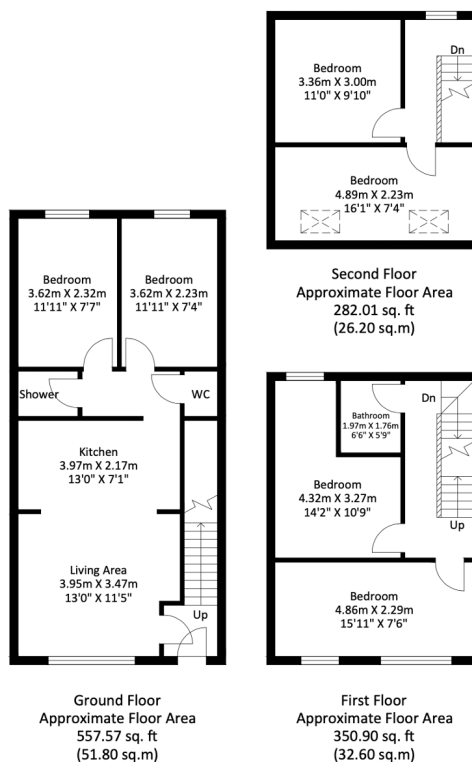
Key Features

Gross rent off £33,886.70 PA • Six double bedrooms • Three bathrooms • Great location • Let to end of June 2023

Full Description

We are delighted to offer for sale a three storey terrace HMO, ideally located for tenants wanting to be close to the Universities, just a 5 minute walk from Wilmslow Road on a quiet cul de sac location. Briefly comprising 6 double bedrooms, 3 bathrooms and a sociable open plan living/kitchen area. Other benefits include double glazing, gas central heating and a security alarm.

The property is currently let to the end end of June 2023 with a gross rent off £33,886.70 PA. Viewing is highly recommended.



Approximate Gross Internal Area = 110.60 sq m / 1190.48 sq ft
Illustration for identification purposes only, measurements are approximate, not to scale.

Energy Efficiency Rating

Score	Energy rating	Current	Potential
92+	A		
81-91	B		81 B
69-80	C	70 C	
55-68	D		
39-54	E		
21-38	F		
1-20	G		