



2 Bed Flat

£165,000 Leasehold

52 Daisy Bank Road, Manchester, M14

Key Features

Two Double Bedrooms • Rental yield of 9.78% • Good Transport Links • Wooden Floors
• Modern Decor • Two new bathrooms • Private parking

Full Description

Tenants in situ. Currently let at £1,343.33 per month exclusive of bills up to the end of June 2026. Rental yield of 9.78%

We are pleased to offer this two bedroom apartment on Daisy Bank Road in the leafy Victoria Park. Set on a quiet road, close to local amenities and bus routes to the city and Universities, it has recently benefited from two brand new bathrooms.

This ground floor apartment, comprises of a spacious entrance hallway, two even sized double bedrooms, modern kitchen with white good included, brand new three piece bathroom and brand new ensuite bathroom with walk in shower. The bright lounge features French doors that access the outdoor terrace and lawned gardens.

Off street parking is included.

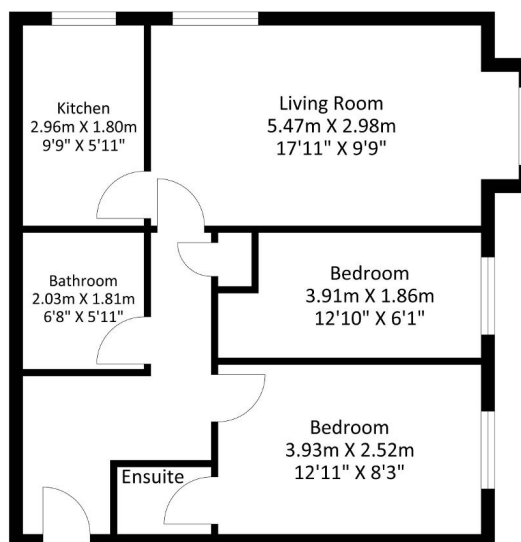
Council tax band B

Service Charge: £137.86 per month

Ground Rent: £200 per annum

Lease 999 years from 1 January 2004

Flat 4 Windsor Place 52, Daisy Bank Road,
Longsight, M14 5QP



Approximate Floor Area
564.02 sq. ft
(52.4 sq.m)

Approximate Gross Internal Area = 52.4 sq m / 564.02 sq ft
Illustration for identification purposes only, measurements are approximate, not to scale.

Energy Efficiency Rating

Score	Energy rating	Current	Potential
92+	A		
81-91	B		
69-80	C		75 C
55-68	D	63 D	
39-54	E		
21-38	F		
1-20	G		